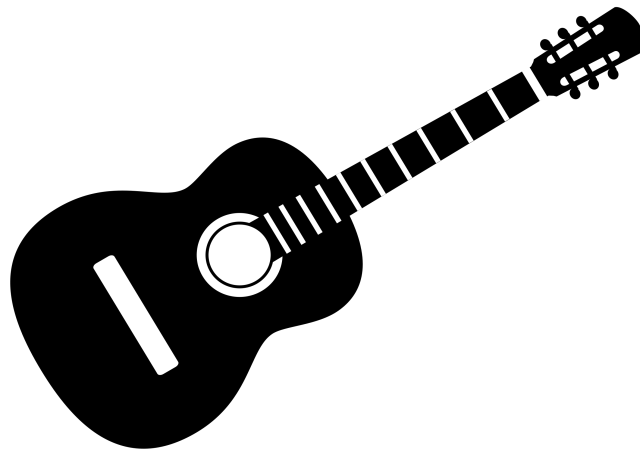


Simple Solos

in guitar-friendly keys



by
Ray Hume

book 2

Simple Solos - book 2

I've been playing the classical guitar for five and a half decades, and teaching it as my main source of income for five. The main thing I've learned in all that time is.....

it ain't easy!

The world of classical guitar sometimes seems to be brimming over with people bent on demonstrating their prowess by playing (or trying to play) music which is at the upper limit of their capabilities (or beyond!).

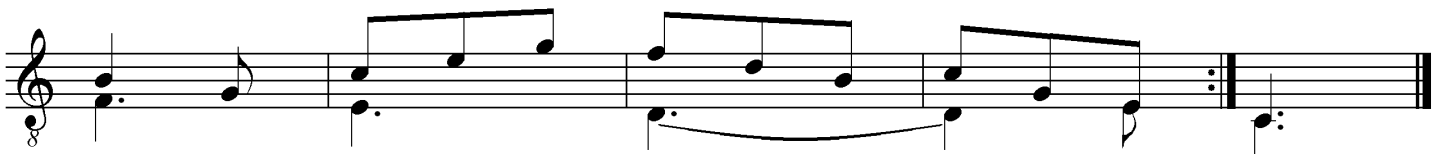
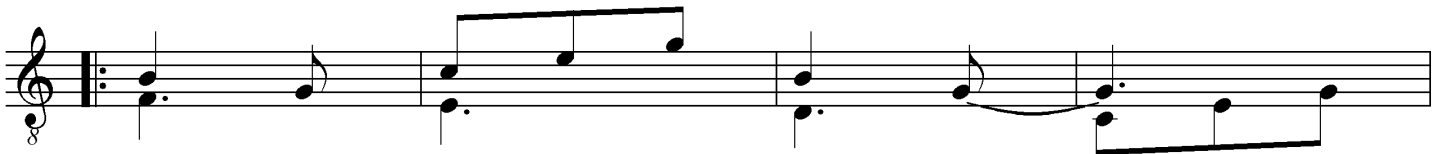
There is much to be said for playing within one's comfort zone, and certainly, especially from the listener's point of view, something a little more modest is likely to fall easier upon the ear.

This second book of simple solos adopts the same general principles as book 1. The same 8 keys are featured - the ones which I consider most idiomatic to the guitar. The level of competence required corresponds roughly to grade 2 or 3 of the UK music college exam syllabuses.

No dynamic markings are provided: interpretation is up to you. The extent to which music comes alive in performance depends on the creative imagination of the performer. Explore and enjoy!

Ray Hume March 2021

Merry-go-Round



Unforgotten

1

1

3

3

5

5

7

7

9

9

11

11

13

13

15

15

Fiesta Veganista

17

3 4 3
2 1 2
0 0 0
3 2 1 3
2 0 0

21

1 2 3
0 2 0
1 3 0
0 3 0

25

1.

2 1 0
0 1 0
0 2 0
2 0 0

29

2.

3BV

2 1 0
0 1 0
0 1 0
1 1 1

Four Leaf Clover

33

34

35

36

Fine

38

39

40

41

42

43

44

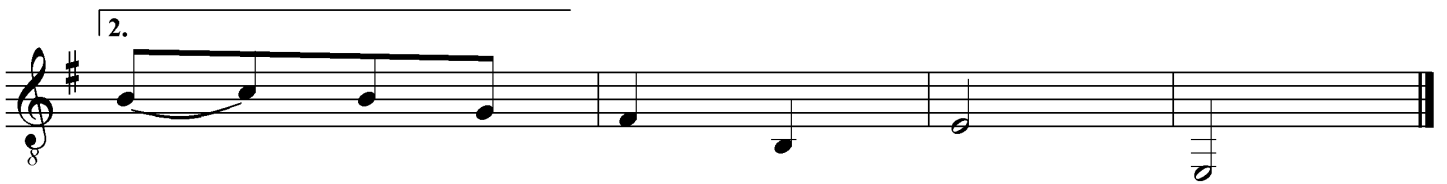
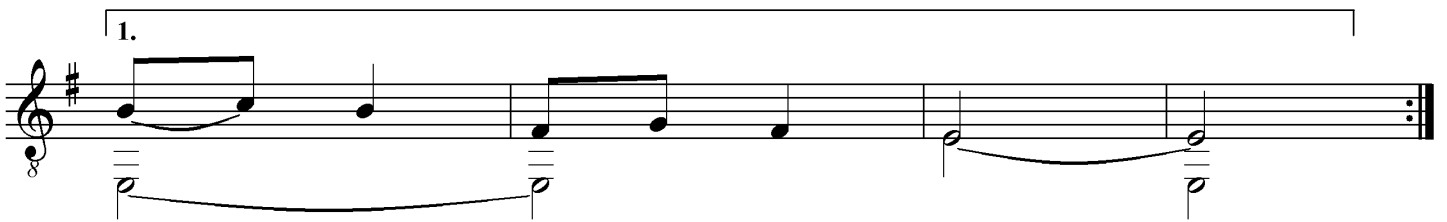
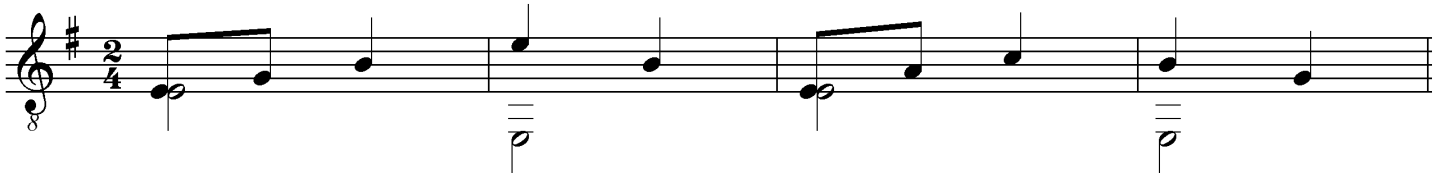
45

46

47

D. C. al Fine

Plodding Ever Onward



Running Late!

112

1 2 3 4 0 2 3 0 1 0 1 3

116

1 4 4 4 1 4

120

1 4 3 2 3 1 3 3 1 3

V IX

124

4 1 1 2 3 2 4 1 2 3 4 2 3 4 1 2 3 4 2 3

130

1 4 4 4 1 4

134

1 4 3 2 3 1 3 3 1 3

Rainy Day Blues

swing rhythm

138

140

142

144

146

148

Everyday Symbols and Terms

semibreve (whole note)
 minim (half note)
 crotchet (quarter note)
 quavers (eighth notes)

key signature
 time signature (number of crotchet beats to a bar)
 string number
 left hand finger
 right hand fingers
 slur (hammer or snap)
 tie

semibreve or whole bar rest
 crotchet rest
 quaver rest
 minim rest
 repeat sign

IV X III
 position (fret where 1st finger should be)
 4BIV
 make a 4 string barre on 4th fret
 barline

play staccato
 accent (play loud!)
 slide left hand finger along fretboard
 fermata (pause)

f loud (forte) ***p*** soft (piano) ***mf*** fairly loud ***mp*** fairly soft

cresc(endo) getting louder

dim(inuendo) getting softer

rall(entando) slowing down rit(ardando) speeding up accelerando speeding up
 sharp = 1 semitone higher flat = 1 semitone lower natural (cancels a # or b)

Scales and Chords

C major

Musical notation for C major scale and chords. The scale is shown in treble clef with a key signature of one sharp (F#). The scale notes are C, D, E, F, G, A, B, C. The chords are C, F, G, and G7, shown in bass clef with their respective notes.

A minor

Musical notation for A minor scale and chords. The scale is shown in treble clef with a key signature of no sharps or flats. The scale notes are A, B, C, D, E, F, G, A. The chords are Am, Dm, E, and E7, shown in bass clef with their respective notes.

G major

Musical notation for G major scale and chords. The scale is shown in treble clef with a key signature of one sharp (F#). The scale notes are G, A, B, C, D, E, F#, G. The chords are G, C, D, and D7, shown in bass clef with their respective notes.

E minor

Musical notation for E minor scale and chords. The scale is shown in treble clef with a key signature of one sharp (F#). The scale notes are E, F, G, A, B, C, D, E. The chords are Em, Am, and B7, shown in bass clef with their respective notes.

D major

Musical notation for D major scale and chords. The scale is shown in treble clef with a key signature of two sharps (F# and C#). The scale notes are D, E, F#, G, A, B, C#, D. The chords are D, G, A, and A7, shown in bass clef with their respective notes.

A major

Musical notation for A major scale and chords. The scale is shown in treble clef with a key signature of three sharps (F#, C#, G#). The scale notes are A, B, C#, D, E, F#, G#, A. The chords are A, D, E, and E7, shown in bass clef with their respective notes.

E major

Musical notation for E major scale and chords. The scale is shown in treble clef with a key signature of four sharps (F#, C#, G#, D#). The scale notes are E, F#, G#, A, B, C#, D#, E. The chords are E, A, and B7, shown in bass clef with their respective notes.

D minor

Musical notation for D minor scale and chords. The scale is shown in treble clef with a key signature of one flat (Bb). The scale notes are D, E, F, G, Ab, Bb, C, D. The chords are Dm, Gm, A, and A7, shown in bass clef with their respective notes.

